



#### Dimensions

Product dimensions (mm)	8 x 2000 x 2,5
Packing dimensions (mm)	150 x 200 x 4
Net weight (g)	90
Gross weight (Kg)	0,14

#### Product

Real power (W)	5,5
Real luminous flux (Lm)	535
Luminous efficiency (Lm/W)	97,3
Beam angle (°)	120
Life time (h)	30000
IP	20
Electrical class insulation	Class 3
Photobiological risk	0 - Exempt
Operating temperature	from -20°C to 35°C
Electrical feeding	24 VDC
Energy efficiency class	A+

#### Control gear

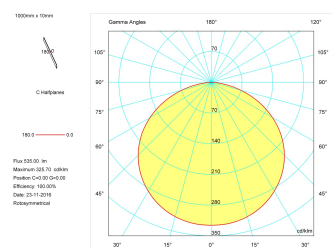
Control gear	Electronic Control Gear
--------------	-------------------------

#### Light source

Light source included	Yes
Light source	Led
Nominal power (W)	5
Nominal luminous flux (Lm)	615
Colour temperature (K)	6000
Colour consistency (SDCM)	3
CRI	80

#### Photometry

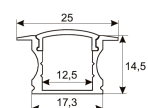
#### Photometry



#### Accessories

11.7890.0012.20	2 m length recessed profile set. Includes: Anodized aluminium profile (Alu6063-T5) + PC clear diffuser + Installation clips + End caps
-----------------	--

#### Scheme



## 2 m. length high efficiency adhesive flexible LED strip from the TROLL family Flexiled.

#### DESCRIPTION

2 m. length high efficiency adhesive flexible LED strip from the TROLL family Flexiled setting an advanced and innovative thermal balance system through passive dissipation with stable colour temperature of 6500° (cold white) optimised to be used as indoor or outdoor lighting where environmental integration was a relevant requirement such as bathrooms, kitchen furniture, shelves or retro-illumination. Designed for wall or ceiling surface mounted. Luminaire built-in a silicone protection diffuser with an angle beam of 120°. Luminaire sets a 5 W LED source with CRI higher than 85 % and a chromatic dispersion lower than 3 SMCD. Fixture has a luminous flux of 535 Lm, with an efficiency of 97,3 Lm/W and a total consumption of 5,5 W. The average life for the luminaire is 30000 h (stabilised at a minimum flux of 70 % from the original). Luminaire is fed at 220-240V; 50/60 Hz. and needs a constant power auxiliary gear.

Item code	11.7890.0586.02
Product type	IN
Category	Surface & Suspended Linears
Family	Led Profile
Subfamily	Flexiled
Materials	Luminaire built in clear silicone UV protected.
Optical system	Luminaire built-in a silicone protection diffuser.
Installation instructions	Luminaire designed for wall or ceiling surface mounted.
Pictograms	

11.7890.0022.20 2 m length surface profile set. Includes: Anodized aluminium profile (Alu6063-T5) + PC clear diffuser + Installation clips + End caps.

Scheme



11.7890.0032.20

2 m length 45° surface profile set. Includes: Anodized aluminium profile (Alu6063-T5) + PC clear diffuser + Installation clips + End caps.

Scheme



11.7890.1012.20

2 m length recessed profile set. Includes: Anodized aluminium profile (Alu6063-T5) + PC opal diffuser + Installation clips + End caps

Scheme



11.7890.1022.20

2 m length surface profile set. Includes: Anodized aluminium profile (Alu6063-T5) + PC opal diffuser + Installation clips + End caps.

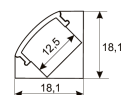
Scheme



11.7890.1032.20

2 m length 45° surface profile set. Includes: Anodized aluminium profile (Alu6063-T5) + PC opal diffuser + Installation clips + End caps.

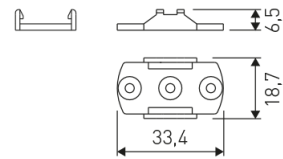
Scheme



478/33

Upper fastening staples. (1 unit)

## Scheme



## 478/C200/00

Transparent cover.

## Scheme



## 478/P200/21

Aluminium profile.

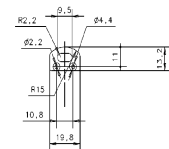
## Scheme



## 478/T/21

Profile covers. (2 units)

## Scheme



## 48/04

With terminals up to 4 mm<sup>2</sup> section. To join 5 mm<sup>2</sup> silicone cable to 13 mm<sup>2</sup>.

## Picture



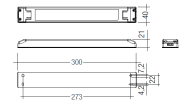
## 71/LD10024

96W Power supply driver from the Troll family Standard DriverP.

Picture



Scheme



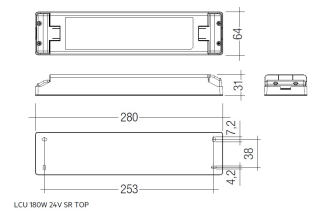
71/LD18024

180W Power supply driver from the Troll family Standard DriverP

Picture



Scheme



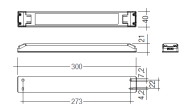
71/LD3524

35W Power supply driver from the Troll family Standard DriverP.

Picture



Scheme



71/LD6024

60W Power supply driver from the Troll family Standard DriverP.

Picture



Scheme



73/DLP

Light dimming controller 12-24V. On/Off  
Push, Dali, 0-10V, 1-10V. (Master)

Picture



73/DLS

Light dimming controller 12-24V. On/Off  
Push, Dali, 0-10V, 1-10V. (Slave)

Picture

