



Dimensions

| | |
|-------------------------|----------------|
| Product dimensions (mm) | 8 x 1000 x 2,5 |
| Packing dimensions (mm) | 150 x 200 x 4 |
| Net weight (g) | 45 |
| Gross weight (Kg) | 0,095 |

Product

| | |
|-----------------------------|--------------------|
| Real power (W) | 5,5 |
| Real luminous flux (Lm) | 543 |
| Luminous efficiency (Lm/W) | 98,7 |
| Beam angle (°) | 120 |
| Life time (h) | 30000 |
| IP | 20 |
| Electrical class insulation | Class 3 |
| Photobiological risk | 0 - Exempt |
| Operating temperature | from -20°C to 35°C |
| Electrical feeding | 24 VDC |
| Energy efficiency class | A+ |

Control gear

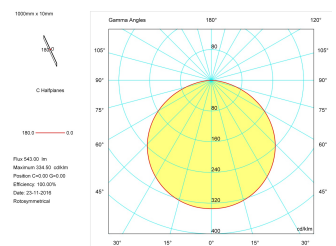
| | |
|--------------|-------------------------|
| Control gear | Electronic Control Gear |
|--------------|-------------------------|

Light source

| | |
|----------------------------|------|
| Light source included | Yes |
| Light source | Led |
| Nominal power (W) | 5 |
| Nominal luminous flux (Lm) | 625 |
| Colour temperature (K) | 4000 |
| Colour consistency (SDCM) | 3 |
| CRI | 80 |

Photometry

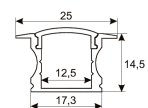
Photometry



Accessories

| | |
|-----------------|--|
| 11.7890.0011.20 | 1 m length recessed profile set. Includes: Recessed anodized aluminium profile (Alu6063-T5) + PC clear diffuser + Installation clips + End caps. |
|-----------------|--|

Scheme



1 m. length high efficiency adhesive flexible LED strip from the TROLL family Flexiled.

DESCRIPTION

1 m. length high efficiency adhesive flexible LED strip from the TROLL family Flexiled setting an advanced and innovative thermal balance system through passive dissipation with stable colour temperature of 4000° K (neutral white) optimised to be used as indoor or outdoor lighting where environmental integration was a relevant requirement such as bathrooms, kitchen furniture, shelves or retro-illumination. Designed for wall or ceiling surface mounted. Luminaire built-in a silicone protection diffuser with an angle beam of 120°. Luminaire sets a 5 W LED source with CRI higher than 85 % and a chromatic dispersion lower than 3 SMCD. Fixture has a luminous flux of 543 Lm, with an efficiency of 98,7 Lm/W and a total consumption of 5,5 W. The average life for the luminaire is 30000 h (stabilised at a minimum flux of 70 % from the original). Luminaire is fed at 220-240V; 50/60 Hz. and needs a constant power auxiliary gear.

| | |
|---------------------------|---|
| Item code | 11.7890.0584.01 |
| Product type | IN |
| Category | Surface & Suspended Linears |
| Family | Led Profile |
| Subfamily | Flexiled |
| Materials | Luminaire built in clear silicone UV protected. |
| Optical system | Luminaire built-in a silicone protection diffuser. |
| Installation instructions | Luminaire designed for wall or ceiling surface mounted. |
| Pictograms | |

11.7890.0021.20 1 m length surface profile set. Includes: Anodized aluminium profile (Alu6063-T5) + PC clear diffuser + Installation clips + End caps.

Scheme



11.7890.0031.20

1 m length 45° surface profile set. Includes: Anodized aluminium profile (Alu6063-T5) + PC clear diffuser + Installation clips + End caps.

Scheme



11.7890.1011.20

1 m length recessed profile set. Includes: Recessed anodized aluminium profile (Alu6063-T5) + PC opal diffuser + Installation clips + End caps.

Scheme



11.7890.1021.20

1 m length surface profile set. Includes: Anodized aluminium profile (Alu6063-T5) + PC opal diffuser + Installation clips + End caps.

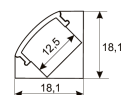
Scheme



11.7890.1031.20

1 m length 45° surface profile set. Includes: Anodized aluminium profile (Alu6063-T5) + PC opal diffuser + Installation clips + End caps.

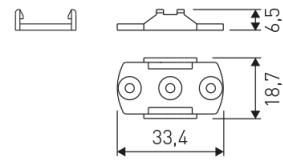
Scheme



478/33

Upper fastening staples. (1 unit)

Scheme



478/C100/00

Transparent cover.

Scheme



478/P100/21

Aluminium profile.

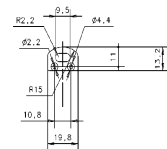
Scheme



478/T/21

Profile covers. (2 units)

Scheme



48/04

With terminals up to 4 mm² section. To join 5 mm² silicone cable to 13 mm².

Picture



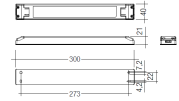
71/LD10024

96W Power supply driver from the Troll family Standard DriverP.

Picture



Scheme



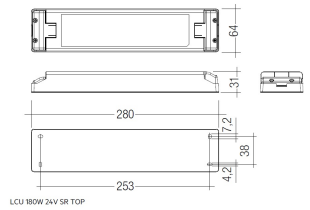
71/LD18024

180W Power supply driver from the Troll family Standard DriverP

Picture



Scheme



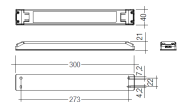
71/LD3524

35W Power supply driver from the Troll family Standard DriverP.

Picture



Scheme



71/LD6024

60W Power supply driver from the Troll family Standard DriverP.

Picture



Scheme



73/DLP

Light dimming controller 12-24V. On/Off
Push, Dali, 0-10V, 1-10V. (Master)

Picture



73/DLS

Light dimming controller 12-24V. On/Off
Push, Dali, 0-10V, 1-10V. (Slave)

Picture

