

PARALUM 5400 63° EDD 04 830

DESCRIPTION

Softlight luminaire to be used in the Paralum system ceiling from TROLL, optimised to be used as general lighting of offices, schools, commercial areas or architectural spaces. Paralum has been designed to be directly suspended from concrete ceiling structure, while the luminaire is installed directly on the Paralum bars. The false ceiling tales are made of High purity aluminium with brackets made of galvanized steel. Luminaire body made from stainless steel sheet finished in black. Luminaire Built-in a high purity aluminium reflector with an angle beam of 50°-90° (depending on the mounting position on the ceiling bars). Luminaire UGR<19. Luminaire adds in an 36 W LED engine with colour temperature of 3000K, CRI>80 and colour stability of 3 SDMC. The total luminaire light output is 2100Lm with an efficiency of 45,6 Lm/W and total consumption of 50W. Luminaire average life is 60000h (L90B10). Luminaire adds in a DALI dimmable electronic control fed at 220-240V; 50/60 Hz.

Item code	CL1/0306/04
Product type	Indoor Lighting
Category	Architectural
Family	Paralum
Subfamily	Paralum
Materials	The false ceiling tales are made of High purity aluminium with brackets made of galvanized steel. Luminaire body made from stainless steel sheet finished in black.
Optical system	Luminaire Built-in a high purity aluminium reflector with an angle beam of 50°-90° (depending on the mounting position on the ceiling bars). Luminaire UGR<19.
Installation instructions	Paralum has been designed to be directly suspended from concrete ceiling structure, while the luminaire is installed directly on the Paralum bars.

Pictograms



Dimensions

Product dimensions (mm) 591 x 612 x 83

Product

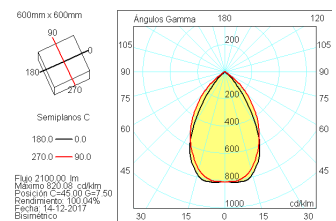
Real power (W)	50
Real luminous flux (Lm)	2100
Luminous efficiency (Lm/W)	42
Beam angle (°)	63
Life time (h)	60000 (L90/B10)
IP	IP20
Electrical class insulation	Class 1
Photobiological risk	0 - Exempt
Operating temperature	from -20°C to 35°C
Electrical feeding	220..240V, 50/60Hz
Colour (RAL)	Black(9005)
Energy efficiency class	A

Control gear

Control gear included	Yes
Control gear	DALI Dimmable Electronic Control Gear
Flicker Free	Flicker Free

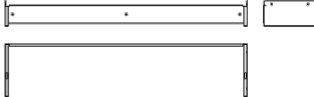
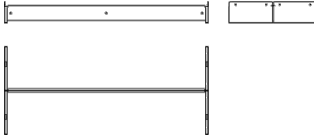
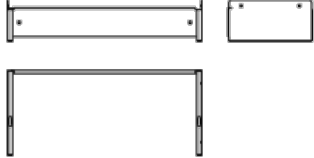
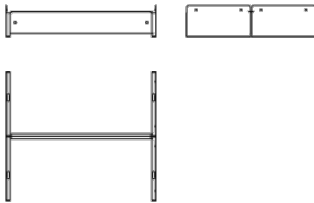
Photometry

Photometry

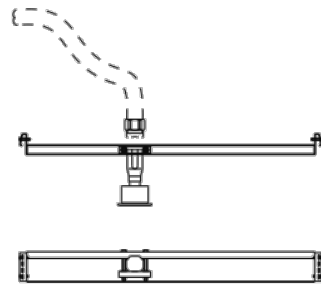


Accessories

11PAR/512	Suspension ROD M6 L = 1 M Includes nut M6 Galvanized steel
3100713600	Profile L= 3600mm Galvanized steel 15 pieces/box
CL1/0101/34	Specular aluminium 4x8 grid.
CL1/0102/34	Specular aluminium 4x4 grid.
CL1/0103/34	Specular aluminium 2x8 grid
CL1/0104/34	Lamas en aluminio con abertura para detector de humos o sprinkler.
CL1/0105/34	Air Grille conditioning Specular aluminium
CL1/0106/34	Specular aluminium 2x4 grid
CL1/0107/34	

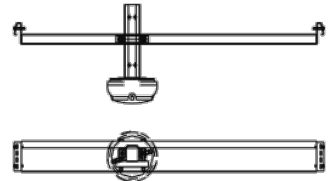
CL1/0108/34	
CL1/0201/00	Simple support 600 Galvanized steel
Scheme	
CL1/0202/00	Double support 600 Galvanized steel.
Scheme	
CL1/0203	Clamp mounting Galvanized steel
CL1/0204/00	Simple support 300 Galvanized steel
Scheme	
CL1/0205/00	Double support 300 Galvanized steel
Scheme	
CL1/0206/04	Lateral 600 mm Straight
CL1/0207/04	Lateral 600 mm External miter
CL1/0208/04	Lateral 600 mm Double Miter Interior
CL1/0209/04	Lateral 300 mm Straight
CL1/0210/04	Lateral 1200 mm Straight
CL1/0211/04	Lateral 300 mm Double Miter (Internal+ external)
CL1/0212/04	Lateral 600 mm Double Miter INTERNAL + EXTERNAL
CL1/0213/04	Lateral 600 mm Double Miter External
CL1/0214/04	Tapa Lateral 600 mm Internal Miter
CL1/0215/04	Lateral 300 mm Internal Miter
CL1/0216/04	Lateral 300 mm Double Miter External
CL1/0217/04	Lateral 300 mm external miter
CL1/0218/04	Lateral 300 mm Double Miter INTERIOR
CL1/0401/04	

Scheme



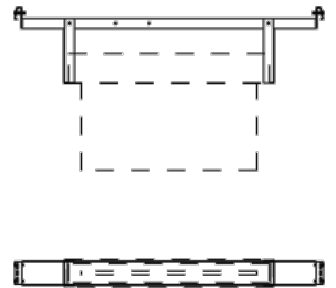
CL1/0402/04

Scheme



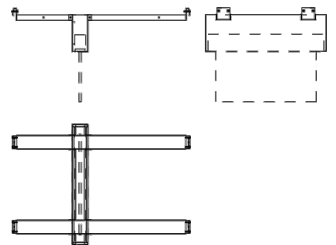
CL1/0403/04

Scheme



CL1/0404/04

Scheme



CL1/0405/04

Height clamp selector